



*I have never been so moved by a theater experience. Brilliant! Everything was brilliant: the direction, the sets, the music, and of course; the acting. Many thanks to The Rogue for the heartfelt and courageous work.*

—Priya Okun, Season Ticket Holder



*The Rogue consistently produces inventive, engrossing theatre. They don't just "produce a play." They work for a deep understanding of social, political, personal conditions referenced in the play and come up with an evening of superb entertainment. After each performance the cast and director come on stage to discuss the play with the audience.*

*This rounds out the evening perfectly.*

—TripAdvisor.com



*And coming this summer—*

## TALES OF THE JAZZ AGE

by F. Scott Fitzgerald

**July 14–24, 2016**

A co-production with Artifact Dance Company  
Romance and disillusion in the atmosphere of a 1920s dance. Jim Powell is a listless lad, a "Jelly Bean." His diffused potential brings him to a party one night where he is entranced by a beautiful gambling woman.



**The Rogue Theatre**

**300 East University Blvd**

in The Historic Y, 1/2 block west of 4th Avenue

**Tucson, Arizona 85705**

[www.TheRogueTheatre.org](http://www.TheRogueTheatre.org)

Rogue Ticket Line: 520-551-2053

THE **Rogue**  
THEATRE

**2016–2017 Season of Plays**

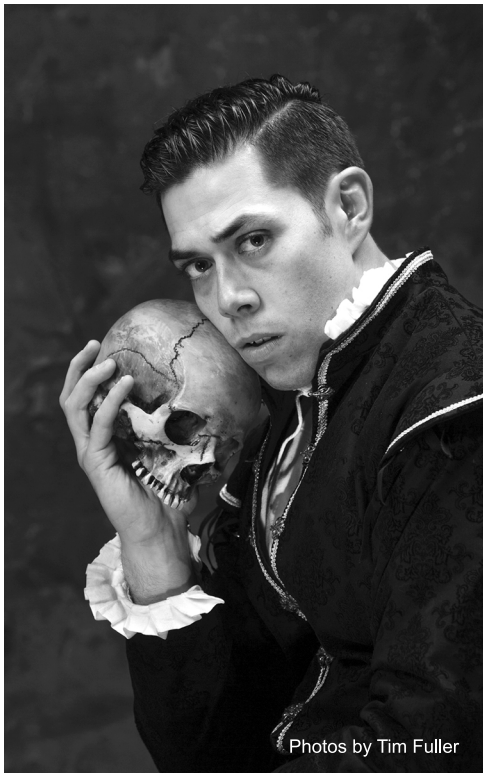
**Great literature.  
Challenging ideas.  
Intimate setting.**



*The Rogue is a Tucson treasure and I delight in my season tickets.*

*The quality of acting and directing is always impressive.*

—Christine Baines, Audience Member



Photos by Tim Fuller

## THE 2016–2017 SEASON

### ANGELS IN AMERICA PART ONE: MILLENNIUM APPROACHES

by Tony Kushner

September 8–25, 2016

Winner of the Pulitzer Prize for Drama and the Tony Award for Best Play, Kushner’s masterpiece is a rumination on America in the 80s told via the tensions of gay life under the specter of AIDS. New York Times writer Frank Rich describes it as “A vast, miraculous play... a searching and radical rethinking of American political drama.”

### UNCLE VANYA

by Anton Chekhov

November 3–20, 2016

Production Sponsors: Meg & Peter Hovell

In one of Chekhov’s most famous plays, an extended family finds itself in the disturbance of unrequited love and regret for roads not taken as the Russian estate is being sold and the world is turning to its new forms.

### THE WHITE SNAKE

by Mary Zimmerman

January 12–29, 2017

Production Sponsors: Barbara Martinsons & Larry Boutis

Based on the ancient Chinese tale of a magical white snake that comes down the mountain in the form of a woman to hear the wisdom of humanity and falls in love with a young scholar. They marry and live together in devotion until she is exposed.



### PENELOPE

by Enda Walsh

March 2–19, 2017

Production Sponsors: Pat & John Hemann

A wild contemporary rendering of the suitors to Penelope in competitive courtship as they sense the impending doom of Odysseus’ return in this familiar classic told from an unexpected point of view.

### MACBETH

by William Shakespeare

April 27–May 14, 2017

Production Sponsors: John & Joyce Ambruster

With the encouragement of his wife and supernatural prediction, Macbeth kills the king and assumes the throne. One of the four great Shakespearean tragedies—the most vivid and benighted.

*As in all masterpieces, there were dimensions and nuances we had not seen explored in quite the same light.*

*Wonderful acting and superb directing!*

—Eugene & Emily Stevick, Audience Members

### SAVE WITH SEASON TICKETS!

\$160 for five plays

Enjoy the best seats in the house!

Order by May 8<sup>th</sup> to receive an additional gift ticket.

Buy tickets online at

[www.TheRogueTheatre.org](http://www.TheRogueTheatre.org)

or at The Rogue Ticket Line

**520-551-2053**

#### Performance times:

Thursday–Saturday 7:30 P.M., Sunday 2:00 P.M.

Additional Saturday 2:00 P.M. matinees on last two weekends of each production

Free parking in adjacent parking lot.

Individual tickets for all performances go on sale in August 2016.